



# SUMMIT GALA

A **Hope Full** Experience

---

A Charity Event Benefiting  
The Summit Counseling Center

*Saturday, March 25th, 2023*  
*6:00 PM*

The Hotel at Avalon

---



# *Mental Health Facts & Statistics*

Mental illness does not discriminate - anyone can be affected, regardless of age, race, religion, or income. The mental health crisis is a global problem for humanity, with major impact on our families locally.

## *Mental Health*

- 50% of mental health problems are established by age 14 and 75% by age 24
- The average delay from when symptoms first appear and intervention is approximately 11 years
- 14% of Georgia youth (age 12-17) report suffering from at least one major depressive episode (MDE) in 2021

## *Suicide*

- Suicide is the second leading cause of death among people aged 10-34
- The estimated number of American adults with serious suicidal thoughts is over 11.4 million - an increase of 664,000 people from 2021
- 93% of adults surveyed in the U.S. believe that suicide can be prevented

## *Access to Mental Health Care*

- Georgia ranks 48th in 50 states for access to mental health care, resources, and insurance
- 2 out of 5 children in Georgia have trouble accessing the mental health treatment they need
- 39% of Georgians were unable to access treatment due to financial restraints in 2021



# About Summit Counseling

The Summit is a trusted 501(c)(3) nonprofit community counseling organization that has helped individuals, couples, and families experience hope, healing, and restoration since 1990. In fiscal year 2022/23, 30 therapists are projected to provide 22,500+ clinical hours to 2100+ individuals, couples, and families at 5 offices and 31 school-based locations.

## Our Mission

The Summit Counseling Center provides professional counseling, psychological services, school-based mental health, and community education services utilizing an integrated approach to care for individuals and families – Body, Mind, Spirit, and Relationships.

## Our Vision

The Summit envisions a community where everyone, without exception, will have full access to professional, integrative behavioral healthcare services.

## Our Values

### Competence

Development of a skilled workforce that delivers and supports the delivery of high-quality, evidence-based clinical services.

### Culture

A shared vision of values, beliefs, and attitudes that drives engagement, impacts satisfaction, and improves both well-being and performance at work.

### Connectivity

Intentional efforts to communicate, collaborate, and provide meaningful feedback, both internally and externally, to accomplish our shared mission.

### Care

Demonstration of thoughtful consideration for Summit staff, both at the team and individual level, so that each employee feels seen and heard.

### Community

Engaging with our stakeholders (clients, partners, and neighbors) in a way that allows them to feel cared for, valued, and respected.



SummitCounseling.org

(678) 893-5300

# *Creating Hope in Our Community*

By removing barriers, implementing prevention, and providing assessments and therapy, the Summit is striving to remove the stigma surrounding mental health in our community.

## *Removing Barriers*

- Removing financial barriers by raising Client Assistance Funds (CAF) to subsidize counseling for those in need
- Removing barriers to accessibility by expanding community locations beyond our 5 office locations, 31 Summit On-Site school partnerships, and telehealth option
- Removing barriers of stigma by providing vital mental health and suicide prevention education through our Mental Health Awareness Program

## *Implementing Prevention*

- Offering confidential, free online screenings to help identify signs of behavioral health concerns and refer those in need to resources
- Providing free trainings to equip our community with the tools needed to recognize signs of suicide and respond with care
- Facilitating group therapy for at-risk youth

## *Providing Assessments & Therapy*

- Providing individual and group therapy to children, teens, adults, and seniors
- Offering couples and family counseling led by professional, caring clinicians
- Conducting suicide risk crisis assessments to students at risk of harming themselves and providing assistance to help keep them safe



SummitCounseling.org

(678) 893-5300





# About Our Keynote Speaker



## Nelba Márquez-Greene

Nelba Márquez-Greene is the founder of The Ana Grace Project. She founded The Ana Grace Project in 2013 as a response to the school shooting in Sandy Hook, Connecticut, in 2012, which took the life of her daughter, Ana Grace Márquez-Greene. The Ana Grace Project is dedicated to promoting love, community, and connection for every child and family through three lead initiatives: partner schools, professional development, and music and the arts.

Márquez-Greene was a founding member of the Connecticut Association for Marriage and Family Therapy Diversity Committee and has served on their board of directors. Additionally, she has testified and advocated at the state and federal levels for mental health initiatives, hosted TEDx talks, and is a sought-after speaker nationally.

Nelba was featured in the 2019 release of *The Book of Gutsy Women* by Hillary Rodham Clinton and Chelsea Clinton and in *People* magazine's October 2019 issue as one of ten "Women Changing the World." In 2018, she was selected as one of the "100 Women of Color" and as a Young Women's Christian Association Women's Leadership Award recipient. Márquez-Greene was also the recipient of the Distinguished Professional Service Award in 2004 and the Service to Families Award in 2013 from the Connecticut Association for Marriage and Family Therapy.

Márquez-Greene graduated from the University of Hartford with a degree in music education. She later received her master's degree in marriage and family therapy from Saint Joseph College in 2005. She lives with her husband (Jimmy Greene, '97) and son in a Connecticut suburb and with Ana Grace in her heart.

**Learn more about Nelba by visiting [thisgrievinglife.com](http://thisgrievinglife.com).**

# Sponsorship Opportunities



## *Monarch*

*Presenting Sponsor*     *\$50,000*

- 10 tickets to the VIP Reception
- 3 Tables(24 Seats) to Gala banquet in premier location near the stage
- Recognition as the VIP Reception sponsor
- Complimentary suite at Hotel at Avalon for the evening of the event
- Logo placement on Gala invitations
- Opportunity to provide corporate branded items to all attendees
- Corporate recognition on all collateral materials
- Prominent logo placement at VIP reception, Red Carpet, Silent Auction, website, scrolling slides, and program book
- Full-page recognition in program book
- Full spread 4-color ad (2 pages) in program book
- Company name included in all press releases and publicity information
- Recognition on social media and on Summit website
- 1 golf foursome in the September 25th, 2023 17th Annual Summit Golf Classic at Country Club of the South



## *Blue Morpho*

*Sponsor*

*\$25,000*

- 8 tickets to the VIP Reception
- 2 Tables (16 seats) to Gala banquet in prominent location
- Recognition as Red Carpet sponsor
- Opportunity to provide corporate branded items to all attendees
- Corporate recognition on all collateral materials
- Logo placement at Red Carpet, website, scrolling slides, and program book-Full page 4-color ad in program book
- Company name included in publicity information
- Recognition on social media and on Summit website





### *Swallowtail*

*Sponsor*

*\$10,000*

- 8 tickets to the VIP Reception
- Table (8 seats) to Gala banquet
- Recognition as Silent Auction sponsor
- Corporate recognition on all collateral materials
- Logo placement at Silent Auction, website, scrolling slides, and program book
- Half page 4-color ad in program book
- Recognition on social media and on Summit website



### *Red Admiral*

*Sponsor*

*\$5,000*

- 1 Table (8 seats) to Gala banquet
- Recognition on website, social media, scrolling slides, and program book
- Quarter page 4-color ad in program book

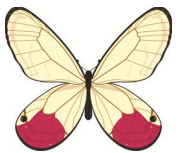


### *Ulysses*

*Sponsor*

*\$3,000*

- 1 Table (8 seats) at Gala banquet
- Name recognition in program book and social media



### *Glasswing*

*Sponsor*

*\$1,000*

- 2 seats at Gala banquet
- Name recognition in program book and social media

**For additional information or to customize your own sponsorship level, contact  
Rachel Newcomer, Director of Development, at  
(770) 605-4504 or [rnewcomer@summitcounseling.org](mailto:rnewcomer@summitcounseling.org)**





# The Summit Locations

Telehealth Appointments Available

## 1. Main Office

2750 Old Alabama Rd, Suite 200  
Johns Creek, GA 30022

## 2. Dunwoody Satellite Location

Dunwoody UMC  
1548 Mt. Vernon Rd, Dunwoody, GA 30338

## 3. Johns Creek Satellite Location

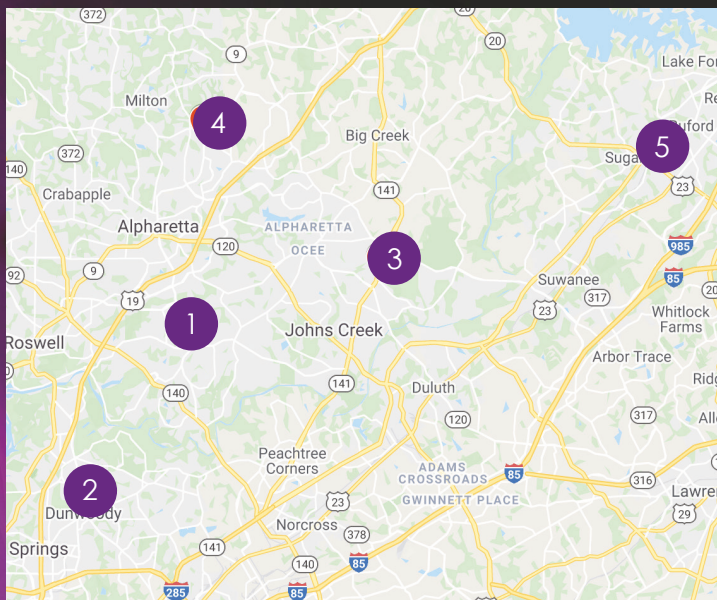
Johns Creek UMC  
11180 Medlock Bridge Rd  
Johns Creek, GA 30097

## 4. Milton Satellite Location

Bethany Bend Village  
13680 Highway 9 North, Building G, Suite 500  
Milton, GA 30004

## 5. Sugar Hill Satellite Location

Church On The Hill  
4600 Nelson Brogdon Blvd, Sugar Hill, GA 30518



## Summit OnSite Locations

Abbotts Hill Elementary School  
5575 Abbotts Bridge Rd  
Johns Creek, GA 30097

Alpharetta Elementary School  
192 Mayfield Rd  
Alpharetta, GA 30009

Alpharetta High School  
3595 Webb Bridge Rd  
Alpharetta, GA 30005

Autrey Mill Middle School  
4110 Old Alabama Rd  
Johns Creek, GA 30005

Barnwell Elementary School  
9425 Barnwell Rd  
Johns Creek, GA 30022

Birmingham Falls Elementary School  
14865 Birmingham Hwy  
Milton, GA 30004

Cambridge High School  
2845 Bethany Bend  
Milton, GA 30004

Chattahoochee High School  
5230 Taylor Rd  
Johns Creek, GA 30022

Crabapple Crossing Elementary School  
12775 Birmingham Hwy  
Milton, GA 30004

Crabapple Middle School  
10700 Crabapple Rd  
Roswell, GA 30075

Creek View Elementary School  
3995 Webb Bridge Rd  
Alpharetta, GA 30005

Dolvin Elementary School  
10495 Jones Bridge Rd  
Johns Creek, GA 30022

Dunwoody High School  
5035 Vermack Rd  
Dunwoody, GA 30338

Esther Jackson Elementary School  
1400 Martin Rd  
Roswell, GA 30076

Findley Oaks Elementary School  
5880 Findley Chase Dr  
Johns Creek, GA 30097

Greater Atlanta Christian School  
1575 Indian Trail Lilburn Rd NW  
Norcross, GA 30093

Hopewell Middle School  
13060 Cogburn Rd  
Alpharetta, GA 30004

Innovation Academy  
125 Milton Ave  
Alpharetta, GA 30009

Johns Creek High School  
5575 State Bridge Rd  
Johns Creek, GA 30022

Lake Windward Elementary School  
11770 E Fox Ct  
Alpharetta, GA 30005

Milton High School  
13025 Birmingham Hwy  
Milton, GA 30004

Mountain Park Elementary School  
11895 Mountain Park Rd  
Roswell, GA 30075

Northview High School  
10625 Parsons Rd  
Johns Creek, GA 30097

Northwestern Middle School  
12805 Birmingham Hwy  
Milton, GA 30004

Ocee Elementary School  
4375 Kimball Bridge Rd  
Johns Creek, GA 30022

Peachtree Middle School  
4664 N Peachtree Rd  
Atlanta, GA 30338

River Trail Middle School  
10795 Rogers Cir  
Johns Creek, GA 30097

Summit Hill Elementary School  
13855 Providence Rd  
Alpharetta, GA 30004

Sweet Apple Elementary School  
12025 Etris Rd  
Roswell, GA 3007

Taylor Road Middle School  
5150 Taylor Rd  
Johns Creek, GA 30022

Webb Bridge Middle School  
4455 Webb Bridge Rd  
Alpharetta, GA 30005